

Appendix II. City Hall HVAC Maps

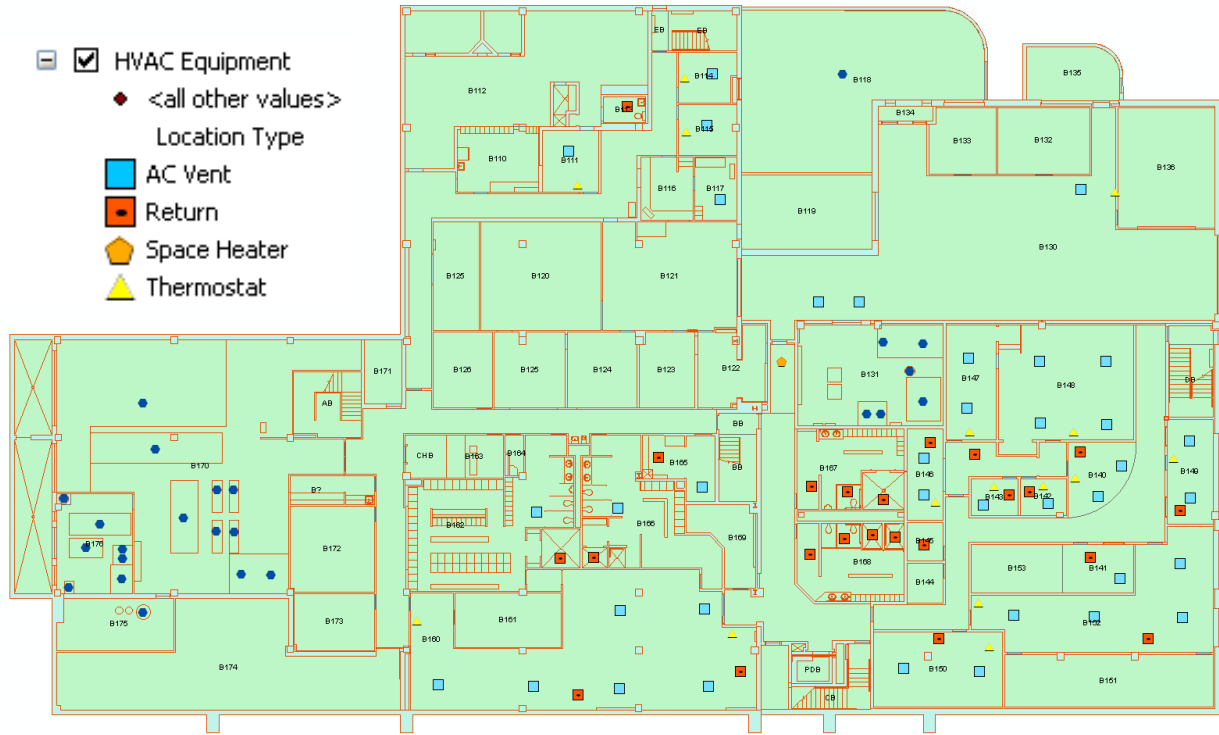


Figure 1. Map of HVAC equipment in City Hall Basement

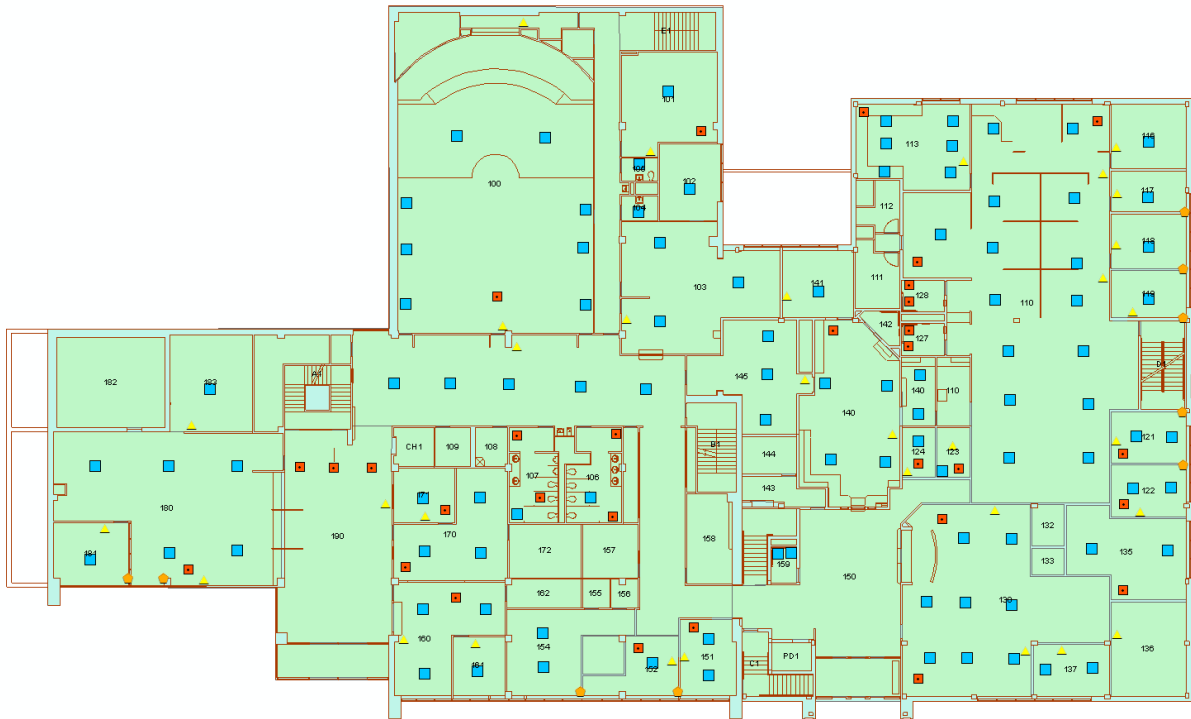


Figure 2. Map of HVAC equipment in City Hall First Floor

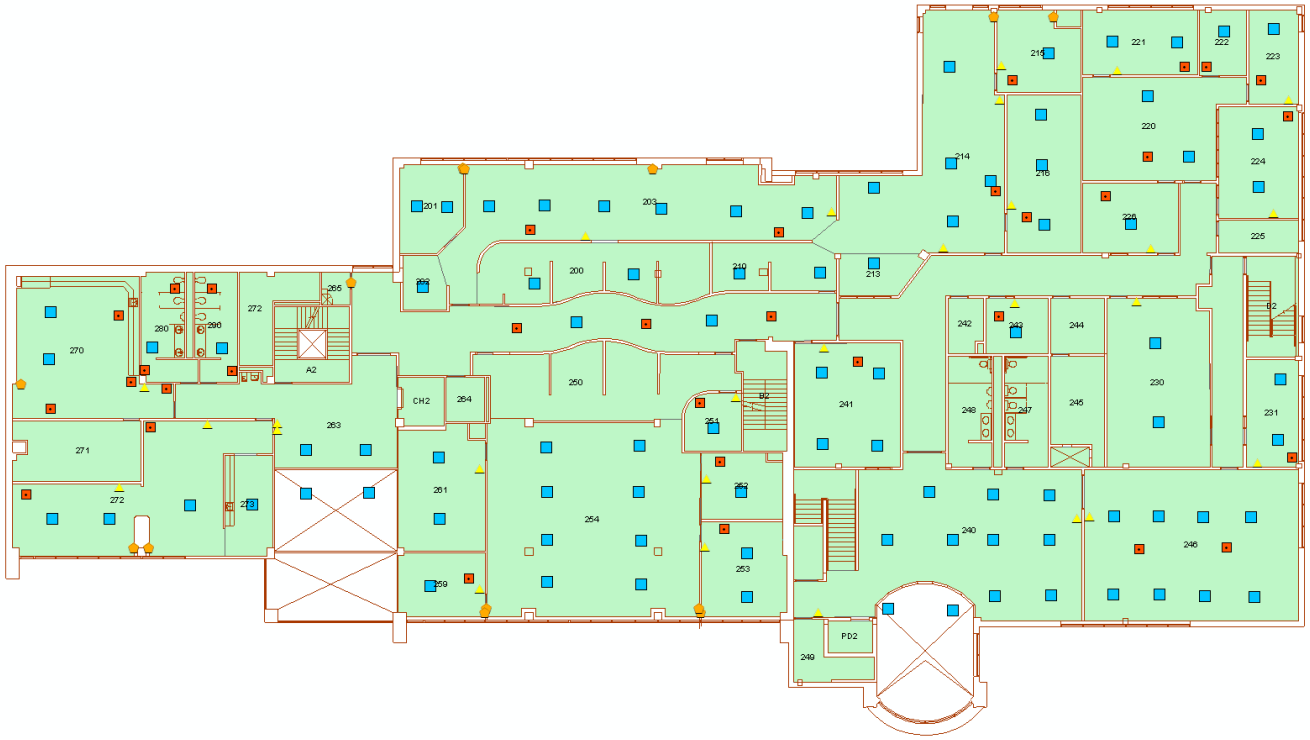


Figure 3. Map of HVAC equipment in City Hall Second Floor

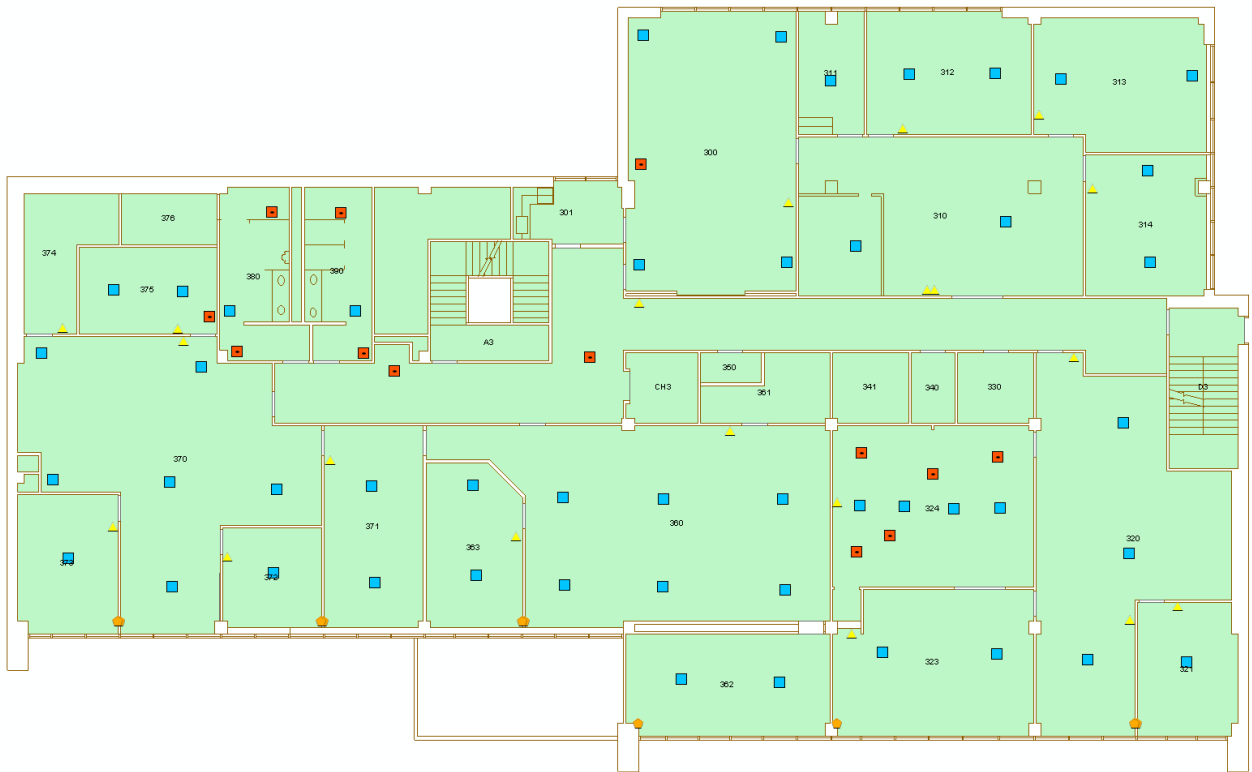


Figure 4. Map of HVAC equipment in City Hall Third Floor

Appendix III. Displaying Information in ArcGIS

In ArcGIS, all data is stored in the system database. In the database, information is stored in layers and sublayers. The user can select specific data layers to display and work with. The Table of Contents shows the data layers and sublayers that are populated in the current map.

Figure 1 shows an example Table of Contents for the maps of HVAC features in City Hall. As can be seen from the Figure, the user can choose to display any number of sublayers such as Fire Protection Equipment and Electrical Equipment. One aspect that is not shown in the Table of Contents is the constraints that are placed on the datasets that are displayed. For example, the “Floors” data layer shows all of the floors in City Hall. Constraints can be placed against this data layer so that only a specific floor will be displayed.

Furthermore, expanding individual data layers and sublayers shows the symbology that represents a specific location type within each sublayer. As can be seen in Figure 1, all HVAC Equipment is represented by a blue hexagon, while different location types for Fire Protection Equipment are displayed with different symbols. The user can arbitrarily modify the symbology as well as select what location types, if any, are displayed under the parent data layer.

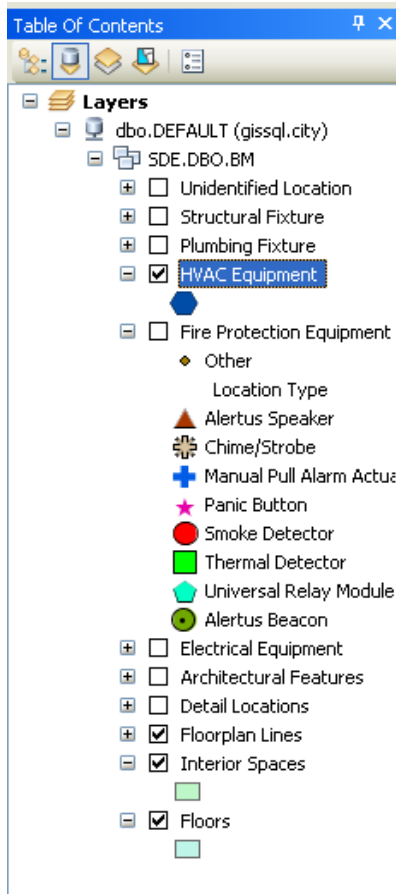


Figure 1. Table of Contents in ArcGIS

In ArcGIS, all data pertaining to a specific feature is directly linked to the data point that represents that particular feature. Data for features can be viewed and edited on a point-by-point basis, or by a selection of points in an Attribute Table. Figure 2 shows how data is viewed and edited on a point-by-point basis.

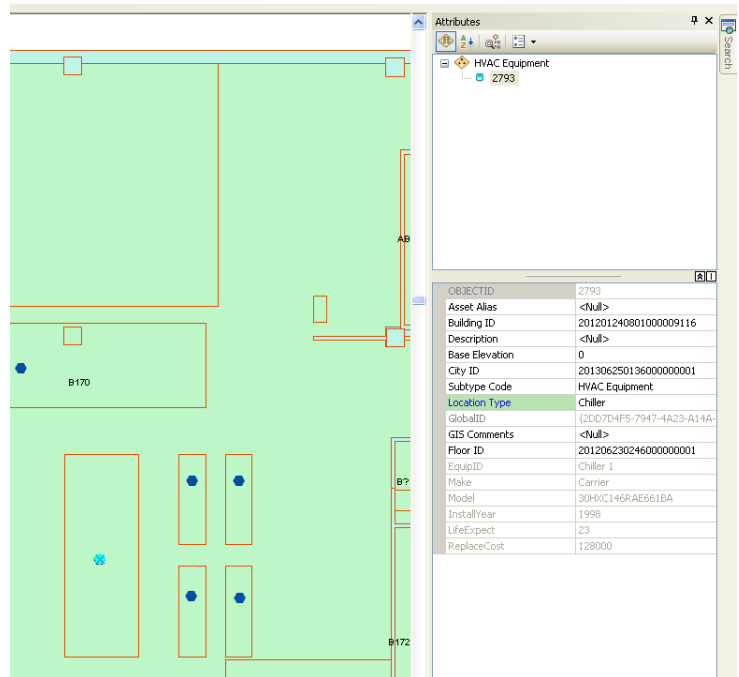


Figure 2. Single Point Attributes

When modifying a relatively small number of data points, or if the data point is only known by its location, the point-by-point approach works well. However, when entering data for a larger number of points, it is often best to work with the Attribute Table. The Attribute Table displays information for all of the data in a layer. From the Attribute Table, multiple data points can be reviewed and modified simultaneously. Figure 3 shows an example of an Attribute Table. The rows that are selected in the Attribute Table correspond to the selected location points on the map. One tool that is particularly useful when modifying data in the Attribute Table is the Field Calculator. The Field Calculator allows the user to populate values for a selection of points simultaneously. For example, if a number of points are at the same base elevation or have the same equipment manufacturer, the Field Calculator can populate the value throughout the entire selection of points.

Base Elevation	City ID	Subtype Code	Location Type	GlobalID *	SHAPE *	GIS Comments	Floor ID	EquipID	Make	Model	InstallYear	LifeExpect	ReplaceCost
0	2013071002380000000000	HVAC Equipment Return	Return	(42929527-F352-47B3-839B-B0C6E3DCB763)	Point Z		2012062302460000000001	<Nub>	<Nub>	<Nub>	<Nub>	<Nub>	<Nub>
0	2013062501400000000000	HVAC Equipment Pump	Pump	(1059E48D-2E14-444F-B33A-40283452087D)	Point Z	Heat pump	2012062302460000000001	Pumps 3	Balator	MZ531T	1984	18	2200
0	2013062501400000000000	HVAC Equipment Pump	Pump	(E3A978EC-8E56-4F0A-8E5F-40E43025C969)	Point Z	Cooling Pump 1	2012062302460000000001	CWP-1	Bel & Gossett	2-1-2EB	1984	20	2200
0	2013062501410000000000	HVAC Equipment Pump	Pump	(4E07FEDA-4C27-45A1-AC0F-F846CA178E0)	Point Z	Cooling Pump 2	2012062302460000000001	CWP-2	Bel & Gossett	2-1-2EB	1984	20	2200
0	2013062501370000000000	HVAC Equipment Pump	Pump	(3548A341-2591-4D78-4B70-2B48F40)	Point Z	Heating Pump 1	2012062302460000000001	HVCP-1	Bel & Gossett	3E	1984	20	2200
0	2013062501390000000000	HVAC Equipment Pump	Pump	(C798BFC7F-4A63-4BC5-8626-276F48A4D7)	Point Z	Heating Pump 2	2012062302460000000001	HVCP-2	Bel & Gossett	3E	1984	20	2200
0	2013062501460000000001	HVAC Equipment Pump	Pump	(9368A92-3870-4D7B-954B-91AD568E3F33)	Point Z	Heat pump	2012062302460000000001	Pumps 4	Balator	MZ531T	1984	18	2200
0	2013062501370000000009	HVAC Equipment Pump	Pump	(398C6344-8E07-446F-B478-28D6C76CFABC)	Point Z	Chilled Water Supply Pum	2012062302460000000001	CWP-4	Bel & Gossett	NA	1984	20	2200
0	2013062501370000000001	HVAC Equipment Pump	Pump	(90999A42-38FD-4F88-4A33-5D7036089E6)	Point Z	Chilled Water Supply Pum	2012062302460000000001	CWP-3	Bel & Gossett	NA	1984	20	2200
0	2013062502010000000002	HVAC Equipment Heat Exchanger	Heat Exchanger	(7604E07B-351E-4666-9A9D-31DC4002A7A8)	Point Z	HVAC 5	2012062302460000000001	<Nub>	<Nub>	<Nub>	<Nub>	<Nub>	<Nub>
0	2013062501680000000005	HVAC Equipment Heat Exchanger	Heat Exchanger	(3383A47B-79E8-47FE-817C-6D66CA468883)	Point Z	HVAC 1	2012062302460000000001	HVAC 1	Tenrol	VF-B218	2000	30	26600
0	2013062502010000000001	HVAC Equipment Fan	Fan	(8E254A2-8E91-4CFC-B4BC-C11194BE32)	Point Z	Exhaust Fan	2012062302460000000001	<Nub>	<Nub>	<Nub>	<Nub>	<Nub>	<Nub>
0	2013062502060000000007	HVAC Equipment Duct Fitting	Duct Fitting	(16389C26-9669-40C5-9193-F8A2E1A48D3)	Point Z	<Nub>	2012062302460000000001	<Nub>	<Nub>	<Nub>	<Nub>	<Nub>	<Nub>
0	2013062501420000000003	HVAC Equipment Compressor	Compressor	(7F93878B-1E98-42C5-98F2-C0BBE0E0E08)	Point Z	Air Compressor	2012062302460000000001	Compr 1	Mosed		1984	20	8200
0	2013062501360000000001	HVAC Equipment Chiller	Chiller	(2007D4F5-7947-4A23-A14A-51EAE4B6A2D)	Point Z	<Nub>	2012062302460000000001	Chiller 1	Carrier	30HX146RAE681BA	1998	23	128000
0	2013071008400000000005	HVAC Equipment Chiller	Chiller	(13A306A-28FA-4C38-30CE-70E244C136)	Point Z	Broken Chiller	2012062302460000000001	Chiller 2	Trane	RTA407H4YMO1A300ECP1MR	2000	23	50000
0	2013061902230000000001	HVAC Equipment Boiler	Boiler	(9FCB3F1F-8866-4912-8E5F-C00CF755113)	Point Z	Boiler 1	2012062302460000000001	<Nub>	<Nub>	<Nub>	<Nub>	<Nub>	<Nub>
0	2013061902210000000000	HVAC Equipment Boiler	Boiler	(ED4B798F-A801-4F61-9849-7A1CC73CC41D)	Point Z	Boiler 2	2012062302460000000001	<Nub>	<Nub>	<Nub>	<Nub>	<Nub>	<Nub>
0	2013062501430000000005	HVAC Equipment Boiler	Boiler	(93C926AA-A73B-4FAF-A385-220B6CF5337A)	Point Z	Make-up domestic water	2012062302460000000001	DWH	AIO SMTH	M-0701947	2008	20	2100

Figure 3. Attribute Table