



Integrated Lighting Campaign

Opportunities for Supporters

February 16, 2023



Webinar Logistics

- Slides and recording will be posted on the [Better Buildings Solution Center webinar page](#)
 - We'll also send them out as soon as they're available!
- Enter your questions into **Slido** and we'll answer as best we can at the end
- For additional **questions or more information**, email IntegratedLighting@pnnl.gov

The screenshot shows the Better Buildings Solution Center website. At the top is the logo for Better Buildings, U.S. Department of Energy, with social media icons for Twitter, LinkedIn, Facebook, and YouTube. A search bar labeled 'SEARCH SOLUTIONS' is on the right. Below is a navigation menu with 'EVENTS & WEBINARS' highlighted. Underneath, there's a section titled 'ON-DEMAND BETTER BUILDINGS WEBINARS' with a banner image of a person in a suit surrounded by energy-related icons. Below the banner is a paragraph of text: 'Through Better Buildings webinars, experts discuss a variety of topics from Air Management to Zero Energy. These webinars are helpful resources on key subject areas in energy efficiency, water efficiency, resilience, and more. Below are webinars we have held over previous years. For each webinar, you can watch the video recording and follow along with the slide deck. To sign up for an upcoming live webinar, [click here](#).' Below this is a section 'EXPLORE WEBINARS BY TOPIC' with three columns: 'TECHNOLOGY' (listing Building Envelope, Energy Data Management, Lighting, Plug & Process Loads, Refrigeration, Renewables Integration, Resilience, Space Conditioning, Zero Energy Buildings), 'SECTOR-SPECIFIC' (listing Data Centers, Industrial, K-12 Schools, Multifamily, Smart Labs, State & Local Government), and 'BEYOND ENERGY' (listing Communications & Engagement, Decarbonization, Financing, Green Leasing, Healthy Buildings, Treasure Hunts, Waste Reduction, Water & Wastewater, Workforce Development, Working with National Labs).

Please go to www.slido.com

using your mobile device, or by opening a new window

Enter Event Code

#DOE

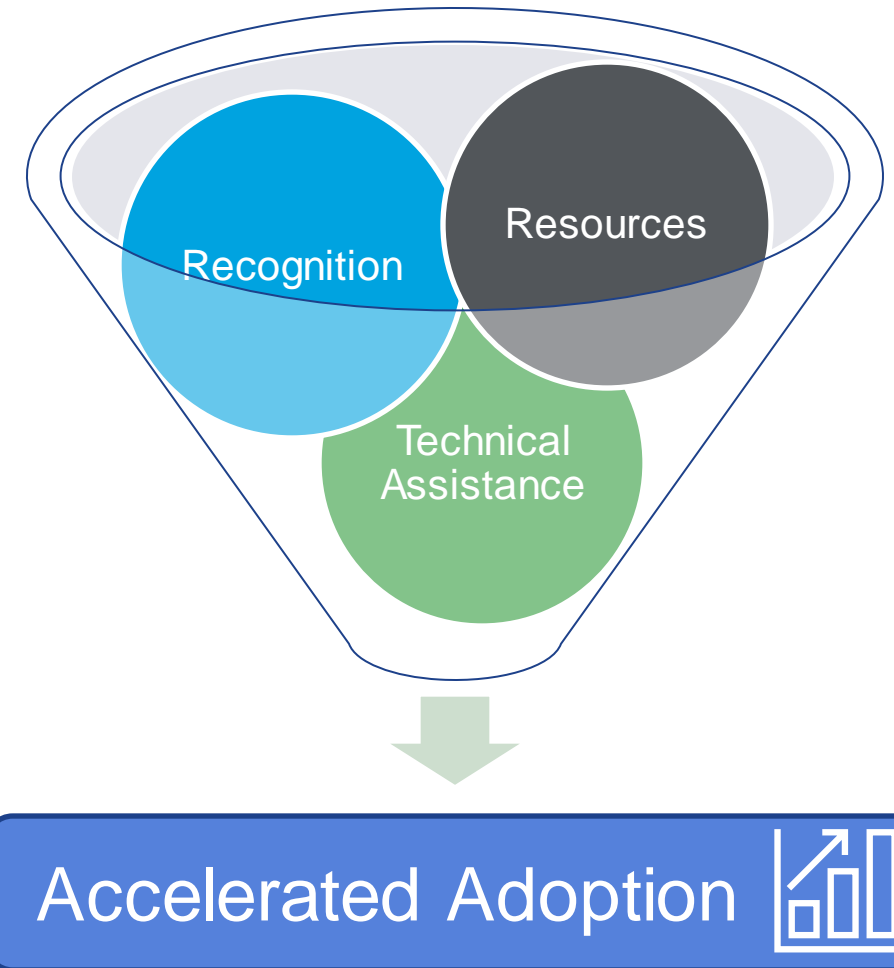
Agenda



What is a technology campaign?

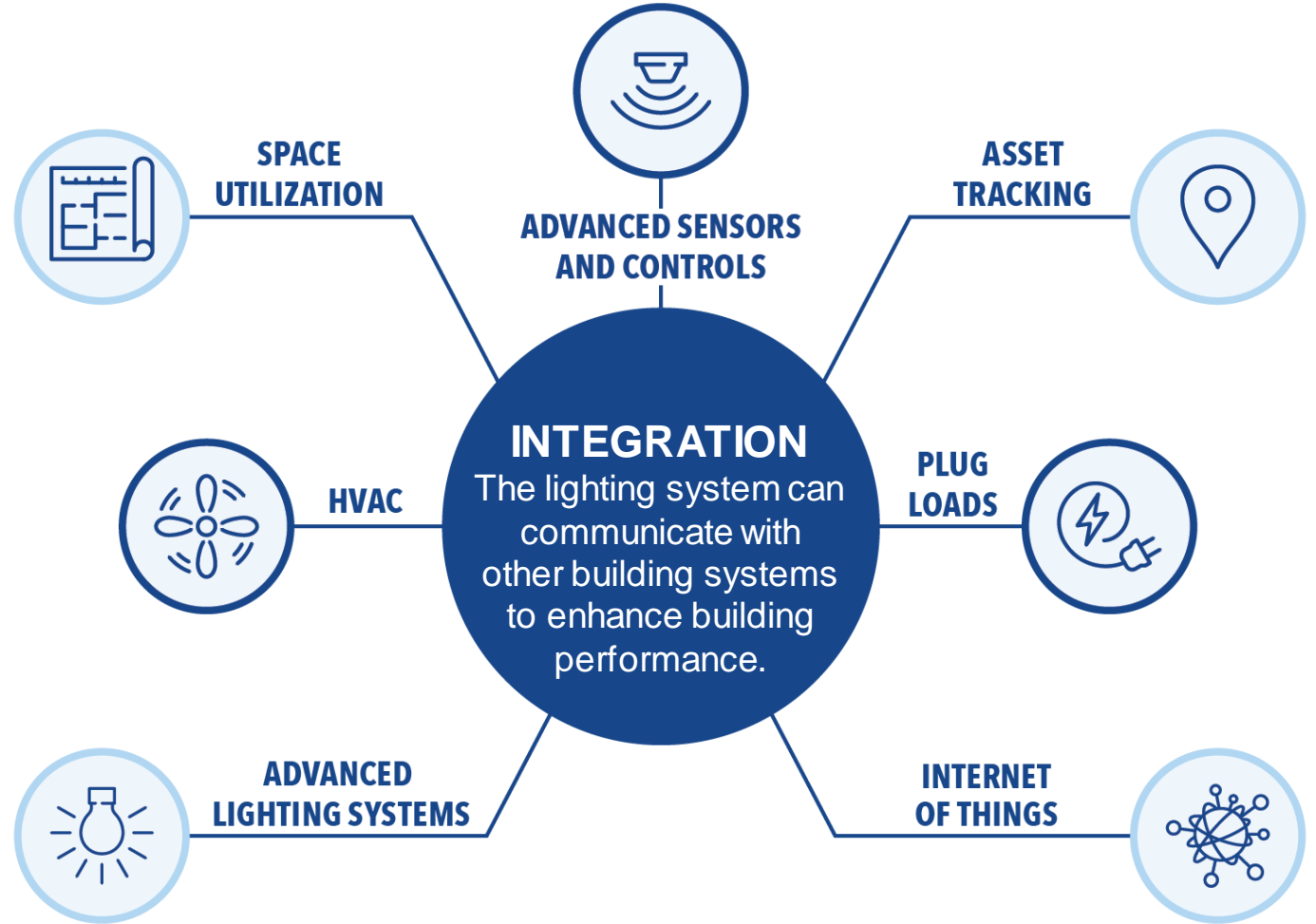
Technology Campaign: a collaborative platform to speed technology adoption

- The Campaign targets:
 - **Building owners and managers** who are open to adopting advanced and novel approaches to improve building performance
 - **Supporting organizations** that help facilitate adoption and support building owner managers
- Demonstrate and recognize **real-world savings and benefits**
- Provide resources that **make it easier for buyers** to consider new or underutilized solutions
- Celebrate **success!**



Overview – Integrated Lighting Campaign

Recognizes **innovative lighting projects and organizations** that push the envelope in terms of integration, energy savings, novel capabilities, and non-energy benefits



Campaign Partners

Organizers

Industry Orgs, DOE, GSA

- Provide direction, guidance, and support
- Confirm recognitions
- Meet bi-weekly with ILC team

Supporters

Energy Efficiency
Organizations, Utilities,
Manufacturers

- Promote ILC in their organizations and networks
- Provide products and services to Participants

Participants

Building owners and facility managers

- Adopt the technology
- Get recognized
- Work with ILC to promote their recognition



DesignLights Consortium

ILC Organizing Committee Member



Energy. Quality. Controllability.



Non-profit
organization



Creates
performance
specifications



Provides
tools,
information,
& expertise



Accelerates
adoption of
efficient
commercial
lighting

Recognized in 2021!

Consumers Energy

Count on Us[®]

 **Seattle City Light**



EVERYTHING
MATTERS

 **Xcel Energy**[®]
RESPONSIBLE BY NATURE[®]

DLC's Members

68 DLC Members

- Electric Utilities
- Efficiency programs
- Regional energy efficiency organizations

Over 50% of all efficiency programs in the US and Canada require DLC-qualified products & systems





Solid-State Lighting

The efficacy of DLC qualified LEDs have increased 70% since we began in 2011.



Networked Lighting Controls

Using networked lighting controls with LEDs provides 49% more lighting energy savings.



Horticultural Lighting

DLC qualified hort LEDs are 35% more efficacious than the most efficacious non-LED option.



LUNA

Outdoor LEDs that save energy and follow environmental practices for nighttime lighting.



Contact Us: info@designlights.org

Subscribe to receive the latest DLC news:
<https://www.designlights.org/subscribe/>



Poll Question:

Let's get to know a little about you. Which of the following best describes the type of organization you represent?

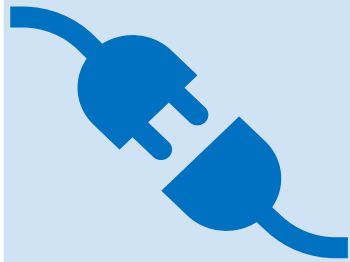
- a. Consultant/Designer/Engineer/ESCO
- b. Distributor/Manufacturer/Solution Provider
- c. Energy Efficiency Organization
- d. Utility
- e. Other

2023 Recognition Categories

Existing Participant Categories



Advanced Use
of Sensors
and Controls
for Lighting



Integrated
Controls for
Plug Loads
and Lighting
Systems



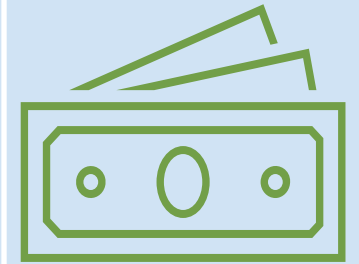
Integrated
Controls for
HVAC and
Lighting
Systems



Other
Integrated
Systems and
Lighting



Integrated
Lighting and
Horticultural
Controls



Innovative
Maintenance,
Operation,
and Financing
Service
Models

NEW 2023 Participant Categories



Advanced Lighting Solutions for Small Buildings (<50,000 ft²)



Germicidal Ultraviolet (GUV) Systems for Energy Savings and Improved Indoor Air Quality



Sustainability in Lighting



Energy Justice, Diversity, Equity, and Inclusion in Advanced Lighting

Supporter Recognition Categories

Exemplary Supporter

- Utility programs focused on advanced controls
- ILC partner recruiting (Supporters and Participants)
- Technical assistance provided for recognition submissions
- Other exemplary support for advanced controls!

Energy Justice, Diversity, Equity, and Inclusion Champion

- Offering high quality jobs that are accessible to those in disadvantaged communities (DACs)
- Prioritizing accountability to local communities by signing Community Benefits Agreements (CBAs)
- Showing a thoughtful and considered JDEI approach to company-level plans and protocols
- Increasing access to low-cost capital in DACs.

2022 Participant Recognitions

Recognition Category	# of Recognitions
Advanced Sensors and Controls	11
Integrated HVAC Controls	0
Integrated Plug Load Controls	2
Other Integrated Systems	2
Integrated Horticultural Controls	2
Innovative Maintenance, Operation, and Financing Service Models	1



THE UNIVERSITY OF VERMONT
AGRICULTURE & LIFE SCIENCES



VERTICAL HARVEST



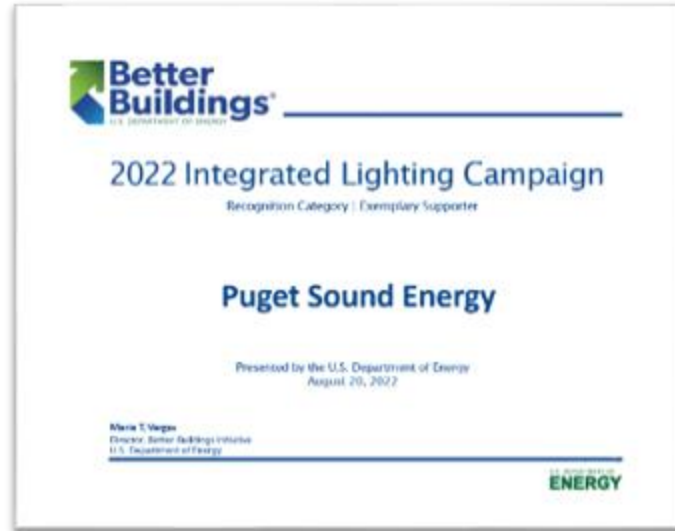
MISSOURI SLOPE
TAILORED CARE. INSPIRED LIVING.



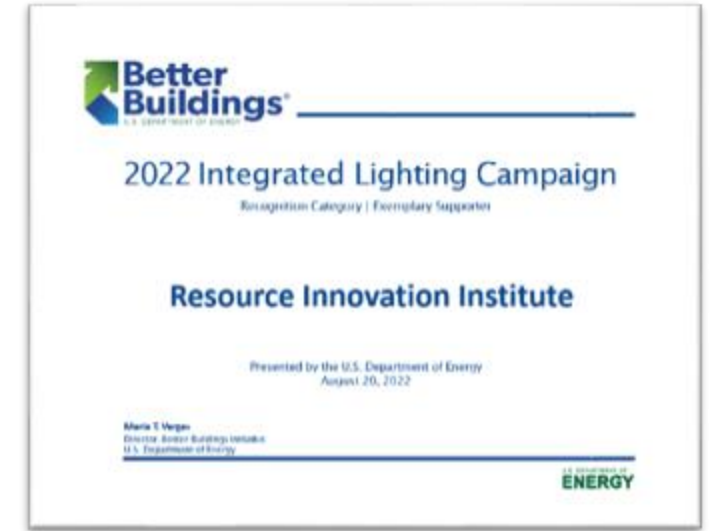
2022 Supporter Recognitions



Exemplary Supporter
DEI Champion



Exemplary Supporter



Exemplary Supporter

Recognition Promotion

2022 RECOGNIZED PARTICIPANT

CHICAGO SMART LIGHTING PROGRAM (CSLP)



Location:
Chicago, Illinois

Recognition Category:
Other Integrated Systems and Lighting

Building Type:
Street Lighting

Project Partners:



integratedlightingcampaign.energy.gov

Supporters highlighted!

Converted more than 280,000 high-pressure sodium streetlights to high-efficiency LEDs with smart Lighting Management System.

Achieved \$8.7 Million (46%) in annual energy savings.

Resulted in improved and more responsive operations of lighting infrastructure.

Considered one of the largest and most reliable Smart Technology Infrastructure systems in the country.

The City of Chicago hired a diverse workforce for this project, including 27% Minority Business and 7% Women's Business Enterprise participation, and 10% workers from economically disadvantaged areas.

In addition to monitoring outages, the lights can be turned on and off, dimmed, and monitored for ampacity, voltage, and wattage. This helps in troubleshooting outages and doing preventative maintenance.

FOR MORE INFO, CONTACT US AT: INTEGRATEDLIGHTING@PNNL.GOV

Infographics highlight key features, metrics and successes

Videos spotlight the participants and lets them tell the story



Recognition Event: August 20, 2022



Supporter Engagement and Benefits

What can I do as a Supporter?

- Join as a Supporter
- Promote ILC through social media, emails, newsletters, etc.
- Identify projects and encourage others to join
- Help ILC Participants submit for recognition
 - (We can do this too!)

CEA is a Proud Supporter of the DOE's Integrated Lighting Campaign

The Department of Energy's (DOE) Integrated Lighting Campaign (ILC) serves as a resource for sharing the latest research on advanced lighting controls and system integration. The campaign offers facility managers and owners third-party, expert guidance and resources on choosing, deploying, integrating, and managing lighting integration. Campaign participants also have the opportunity to receive recognition for innovation and exemplary performance of their lighting project.

Partners of the ILC are working together towards a common goal of making buildings more energy efficient and more comfortable for occupants. Through the campaign, lighting industry professionals are sharing knowledge, lessons learned, best practices, and resources so everyone can take advantage of savings opportunities and benefits of integrating lighting systems with other building and business systems in their facilities.

[LEARN MORE HERE](#)

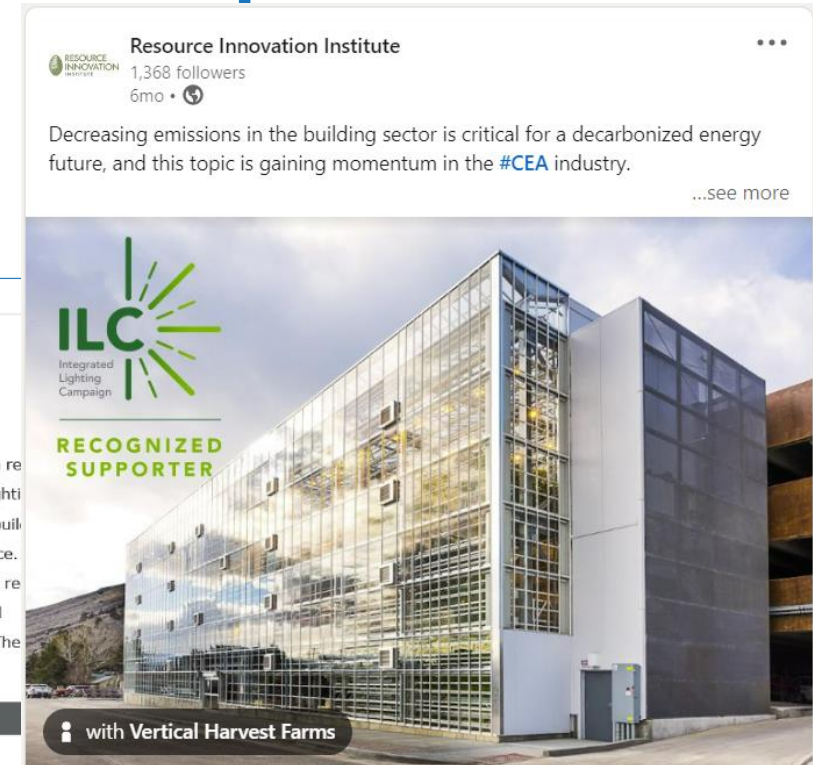
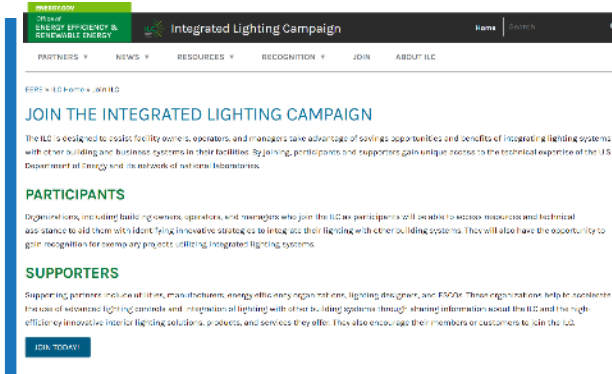


Get Your Connected Lighting Installations Recognized



The Integrated Lighting Campaign promotes innovative connected lighting integration of lighting with other building systems to improve efficiency and performance. A lighting installation that should be recognized through the [ILC website](#) or email integratedlighting@pnnl.gov. The recognition deadline is April 15.

[Back to Top](#)



Supporter Engagement and Benefits

What are the benefits?

- DOE exposure through social media, emails, newsletters
- Appear in case studies and promotion
- Increased adoption of energy-saving systems
- Featured in industry media
- Recognition opportunity
- Use of ILC Supporter logo



PROUD
SUPPORTER

A collage of images demonstrating supporter engagement and benefits. At the top left is the ILC logo. To its right is the text 'PROUD SUPPORTER'. Below these are several screenshots: a '2022 RECOGNIZED SUPPORTER' banner for Puget Sound Energy (PSE) and Better Buildings; a case study for PSE detailing energy savings and occupant comfort improvements; a screenshot of an Energy.gov article titled 'Industry partners lead the way to better buildings via integrated lighting and controls'; a screenshot of a DOE press release titled 'DOE Recognizes Commercial Lighting Leaders through the Integrated Lighting Campaign'; and a screenshot of a social media post from C. Axel Pearson about the Better Buildings initiative. The bottom of the collage features logos for Better Buildings, GSA, NALMCO, IES Illuminating Engineering Society, LCA Lighting Controls Association, IFMA, and the U.S. Department of Energy.

2022 RECOGNIZED SUPPORTER

Better Buildings ILC

PUGET SOUND ENERGY

PSE has incentivized more than 75 projects with more than 11,000 Luminaire Level Lighting Controls (LLC), resulting in 2.2 million kWh saved from the controls and 8.6 million kWh saved by replacing inefficient fixtures.

The incentive pays a per-kWh savings and a bonus towards purchase and initial programming. In 2022, PSE added a Exterior Networked Lighting Control (ENLC) incentive.

In 2015, PSE recognized an opportunity to improve occupant comfort in their Bothell office by piloting the newest LLCs to hit the market at the time.

During the retrofit, PSE replaced older parabolic fluorescent 32-watt T8 fixtures. Additionally, there were low and recessed light levels across the building due to the lighting layout.

The LLC provided easy installation, control, and increased occupant comfort. Additionally, the LLC contributed to 72% energy savings from the controls and a 35% energy savings from the LED fixtures alone.

IntegratedLightingCampaign.energy.gov

PUGET SOUND ENERGY

FOR MORE INFO, CONTACT US

ENERGY.GOV

Office of
**ENERGY EFFICIENCY &
RENEWABLE ENERGY**

EERE News

September 6, 2022

DOE Recognizes Commercial Lighting Leaders through the Integrated Lighting Campaign

The U.S. Department of Energy's (DOE's) [Integrated Lighting Campaign](#) (ILC) recognized 18 organizations for leading the adoption of advanced lighting controls and integration of lighting with other building systems. This campaign is part of the Better Buildings Initiative and worked with these partners, as well as 20 recognized last year, to demonstrate that integrated lighting systems are enabling deeper energy savings in buildings and creating an enhanced user and occupant experience. Partners were recognized at the Illumination Engineering Society (IES) annual conference on August 18th, 2022.

DOE recognized the following organizations this year:

LEDs

CONNECTED SSL & CONTROLS

Industry partners lead the way to better buildings via integrated lighting and controls

AXEL PEARSON summarizes the key attributes of the projects and partners recognized in the 2022 Integrated Lighting Campaign, part of the DOE's Better Buildings Initiative.

Sept. 6, 2022

Better Buildings

U.S. DEPARTMENT OF ENERGY

SEARCH SOLUTIONS

SOLUTIONS PROGRAMS & PARTNERS EVENTS & WEBINARS LEARN MORE

DOE RECOGNIZES COMMERCIAL LIGHTING LEADERS THROUGH THE INTEGRATED LIGHTING CAMPAIGN

The U.S. Department of Energy's (DOE's) [Integrated Lighting Campaign](#) (ILC) recognized 18 organizations for leading the adoption of advanced lighting controls and integration of lighting with other building systems. This campaign is part of the Better Buildings Initiative and worked with these partners, as well as 20 recognized last year, to demonstrate that integrated lighting systems are enabling deeper energy savings in buildings and creating an enhanced user and occupant experience. Partners were recognized at the Illumination Engineering Society (IES) annual conference on August 18th, 2022.



ILC Resources

YouTube video thumbnail for 'Integrated Lighting Campaign (ILC)'. The video title is 'Get your Integrated Lighting Project Recognized!'. The thumbnail includes a central diagram with 'INTEGRATION' at the center, surrounded by icons for 'SPACE UTILIZATION', 'ADVANCED SENSORS AND CONTROLS', 'ASSET TRACKING', 'PLUG LOADS', and 'HVAC'. Below the diagram, it lists: 'Recognized participants announced at IES Annual Conference', 'Case Studies developed', and 'Presented by DOE'.

Recorded webinars and training

Better Buildings case study for Denver Water. Title: 'Agency Recognized for Integrated Controls for HVAC and Lighting Systems'. Subtitle: 'CASE STUDY: DENVER WATER'. Section: 'About the Project'. Text: 'Denver Water is committed to maximizing energy savings in its buildings and is focused on the potential energy related benefits from integrating advanced lighting systems with HVAC systems. The 36-acre Denver Water campus is home to nine buildings—seven of which are newly constructed. Completed in late 2019, the certified LEED Platinum Administration building was designed with peak energy efficiency in mind. It includes a networked lighting control system that is building automation and control networks (BACnet) integrated with the building automation system and shows real-time status of the...'. Image: 'Denver Water Administration Building'.

Reports, fact sheets, and case studies

Screenshot of the Integrated Lighting Campaign website. The page title is 'Integrated Lighting Resources'. Under the 'UTILITY INCENTIVE' section, there are several links: '2018 DOE Commercial Lighting Program Summary', 'Commercial Energy Efficiency', 'DesignLights Consortium Networked Lighting Controls Program Summaries', and 'Utility Incentives'. A 'CATEGORY' sidebar on the right lists: 'Reports, Fact Sheets: 079', 'Tools: 016', 'Case Studies: 03', 'Webinars/Training: 03', and 'Utility Incentives: 03'.

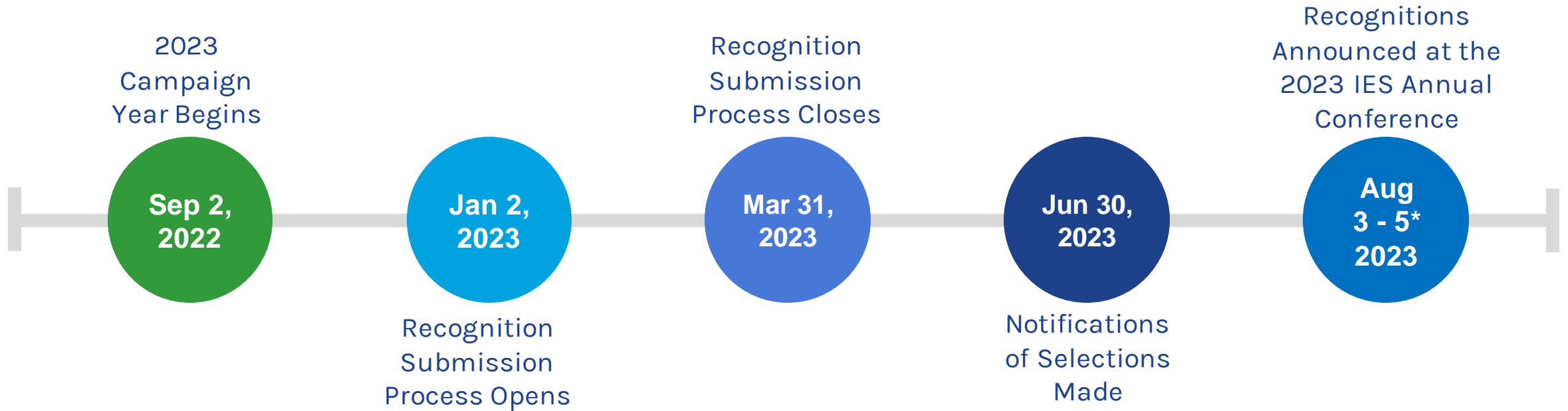
Information on utility incentives

Poll Question:

Now that you know a little about the Campaign, what do you think?

- a. I already support the ILC and I want to be recognized!
- b. I know of a project and I want to support the ILC
- c. I have some thoughts for you; I'll get in touch
- d. Hmm, I need some more info
- e. I think I'm ready for lunch

Campaign Timeline



*Exact date of the Recognition Ceremony is TBD. We'll announce it as soon as we know!

Ready to Submit for Recognition?

ENERGY.GOV
Office of ENERGY EFFICIENCY & RENEWABLE ENERGY

Integrated Lighting Campaign

Home Search

PARTNERS NEWS RESOURCES RECOGNITION JOIN ABOUT ILC

EERE » ILC Home » Submit for Recognition

ILC Exemplary Performance

2023 Recognition Cycle

The Integrated Lighting Campaign (ILC) is a recognition and award program that celebrates building owners, operators, and managers who save energy and money in their facilities. The ILC documents the adoption of advanced lighting technologies and recognizes exemplary projects.

This form is intended for the Recognition process for:

- ILC Participants (organizations including building owners, operators, and managers) who have installed advanced lighting systems and want to be recognized.
- ILC Supporters (utilities, energy efficiency organizations, lighting designers, and ESCOs) to submit for recognition for their efforts to support and implement the use of advanced technologies that facilitate integration in buildings.

The Campaign seeks to highlight applications that have a positive impact on energy justice, diversity, equity, and/or inclusion. Partners that support the unique needs of under-served communities through their deployment, installation, or supporting activities should provide relevant information in the narratives.

I would like to submit recognition for:*

Exemplary Participant
I am submitting for my, or on behalf of another, organization for building(s) that have installed lighting systems that fall into one or more of the ILC's Recognition Categories.

Exemplary Supporter
My organization has enrolled as an ILC Supporter and has actively supported the Campaign through programs or incentives that accelerate the adoption of advanced sensors or integration of lighting systems, through Participant recruitment and support, and/or through energy justice, diversity, equity, and inclusion efforts.

OVERVIEW
PARTICIPANT RECOGNITION CATEGORIES
SUPPORTER RECOGNITION CATEGORIES
SUBMIT FOR RECOGNITION
2021 RECOGNITION
2022 RECOGNITION

Tell us your story!

Narrative:

Provide a clear written description of program including start/end dates – please include pilot demonstrations if applicable, or description of contributions to the Integrated Lighting Campaign.

Supporting Data:

Provide supporting data such as number of buildings/systems impacted, energy savings calculated/measured, outreach efforts on behalf of the ILC, participants/projects recruited to the ILC, etc.

Discussion and Q&A

Discussion questions (enter your responses into Slido):

- What else would you like to see from ILC?
- What would help you support the ILC?
- What would make being a Supporter more valuable?
- How can we better recognize Supporters?

Questions and Answers

- Enter questions into Slido

Other Questions or Comments?

Email us at
IntegratedLighting@pnnl.gov

Get involved: <https://integratedlightingcampaign.energy.gov>



Pacific Northwest
NATIONAL LABORATORY

Axel Pearson, LC
PROJECT MANAGER

Phone: 509-372-6079
axel.pearson@pnnl.gov

902 Battelle Boulevard
P.O. Box 999
Richland, WA 99352

www.pnnl.gov

Contact us: integratedlighting@pnnl.gov